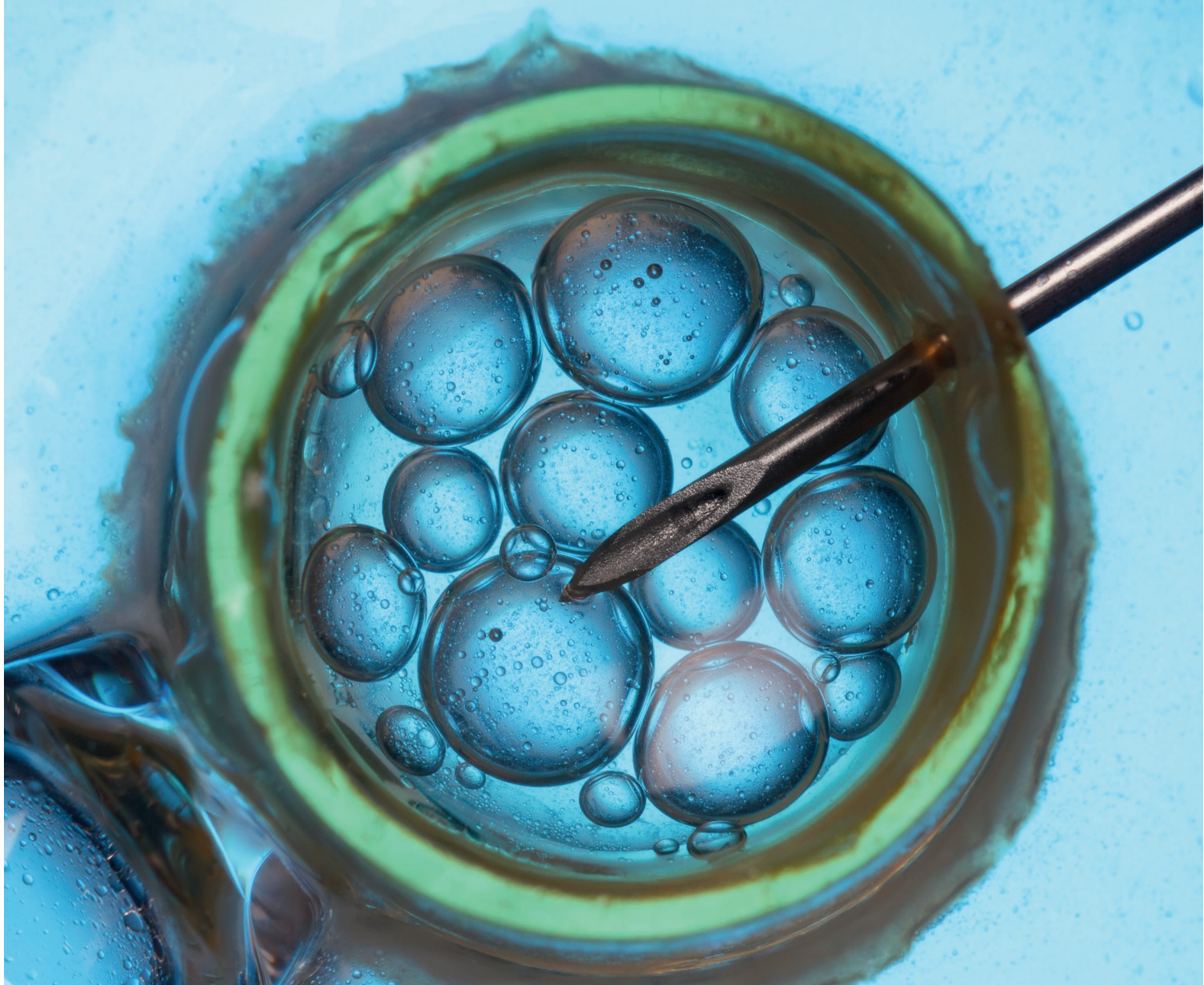


Do you know the DNA of your SAP application?

Smart Analysis of operative Data



www.pbs-software.com

Do you know the DNA of your SAP application ?

"It is a capital mistake to theorize before one has data."

Sir Arthur Conan Doyle
(1859-1930), Autor

All business information that your company generates daily forms the "DNA" of your SAP applications. Through accurate evaluation and analysis of this data, you can obtain a meaningful basis on which you can successfully continue to drive your business..

Use this information to increase the competitiveness and the success of your company.

With OA4ERP you can quickly and flexibly transform your business data into meaningful information. With the new solution Operational Analytics for ERP (OA4ERP) you realize these requirements smartly – directly in your SAP ERP environment. OA4ERP additionally provides you all options to enable the detailed design of meaningful planning and analysis processes. When doing this, OA4ERP supports the integration of non-SAP data that is becoming increasingly important.

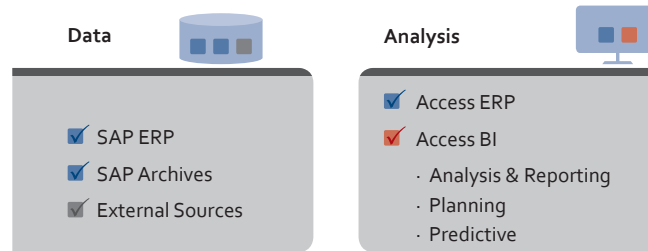
You can run the solution in a classic ERP or in an S/4HANA application.

Analyze your business data directly from SAP ERP or S/4 or via one of the high-quality Business Intelligence tools that are also part of the solution. OA4ERP processes operational data from the SAP ERP application (database + archive) or any other data from external sources. The storage and processing of the data takes place in the OA4ERP analysis database that can execute analysis processes extremely fast. The huge advantage of this is that there is no impact on your SAP database during analyses.

OA4ERP can be used independently of the SAP database system (anyDB or HANA) or of the ERP version (Business Suite or S/4HANA).

Advantages at a glance:

- Smart analyses of SAP and non-SAP data
- Analysis templates for reporting, planning and predictive scenarios
- Extreme fast response times by column-oriented database technology
- Different front ends (SAP GUI, browser, mobile, etc.)
- Improved compliance and data governance (GDPR)
- Supports migration to SAP S/4HANA
- High cost savings by clever data management



Complex analyses made easy

OA4ERP provides for each user an interface that suits them. As a managing director, you have access at any time via the intuitive web interface to the information that is necessary to manage a business. When doing this you can create sophisticated analyses with just a couple of clicks directly from operational ERP data and data that has already been archived. External data sources that were not generated in SAP applications can also be easily integrated into the analyses.

Of course, as an experienced SAP user, you also have the possibility to evaluate the data via your usual SAP GUI.

With OA4ERP you create queries in seconds with impressive performance. To further support you, the OA4ERP core provides an intelligent data management capability and predefined data models that are optimized for analyses.

Execution of the analyses is managed interactively according to the user's requirements.

Modular Concept

The core of OA4ERP comprises the fast analysis database. Furthermore, OA4ERP provides you with further modules that help you to improve data management or to reduce programming effort.

Module: Data Analysis

You use the standard transactions and reports with access to the OA4ERP database in your usual SAP GUI for the analysis of your SAP data.

With the integrated Query Configurator, you can create queries in seconds and in this way minimize the effort required for developing ABAP programs. You can enhance already existing customer-specific reports using an ABAP programming interface to include access to the OA4ERP database. The analysis results are generated in a highly efficient manner without increasing the load on your SAP database.

Module: Templates

As preparation for the analyses, replication templates are provided that you fill with your data. Analysis templates are available for the following areas based on this content:

- Reporting
- Planning
- Predictive Analytics

You create interactively your analysis dashboards and reports directly on the basis of these templates with the help of the available self-service functions.

The intelligent data management of OA4ERP includes services for the automated replication of the data. With a well thought out monitoring capability you can oversee the integration of external data, the replication, and the filling of the analysis templates.

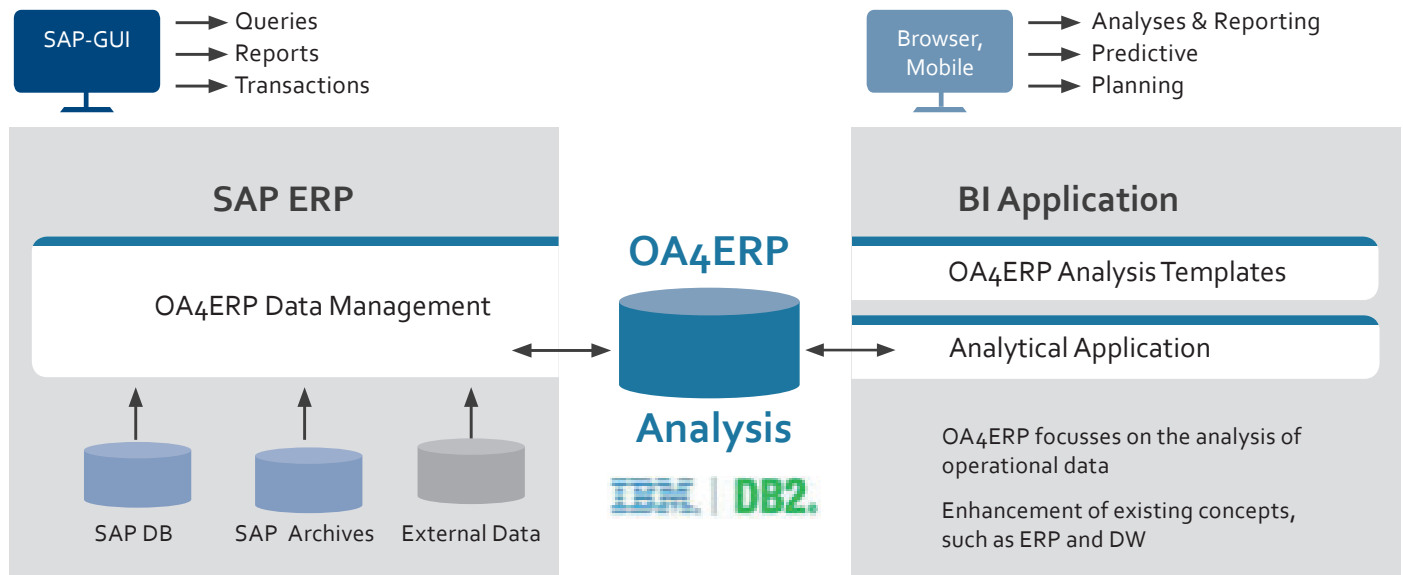
Module: Migration S/4HANA & Data Archiving

OA4ERP provides completely integrated access to all database and archive data in your SAP landscape. The user continues to work with their usual reports and transactions for archived transaction data without any media disruption. As a result, OA4ERP provides the possibility to minimize the residence time of the data and therefore enables archiving to be done more stringently. This reduction in the size of the database considerably reduces the operating costs. You can achieve additional cost savings through the archiving system that is integrated in OA4ERP, by transferring the archived data from the SAP system to inexpensive storage media (for example Cloud, Hadoop). The archiving option already mentioned above additionally facilitates database migration when moving to SAP S/4HANA. The cost-saving potential is enormous because archived data does not need to be migrated. This archive data can be called up independently of the release and therefore does not have to be taken into consideration during the migration. The smaller the database, the smaller the data footprint during and after the migration. As a result, you reduce the costs for the migration and the operation of S/4HANA.

Module GDPR & GoBD

With OA4ERP you master the extensive requirements of the General Data Protection Regulation (GDPR) and tax regulations. OA4ERP helps you to implement stringently the protection, blocking, and deletion of personal data in your SAP system, closely based on the SAP ILM functionality. You can completely fulfill regulatory requirements through the integrated OA4ERP access to database and archive data.

Overview: OA4ERP Components and their Integration in an SAP ERP Environment



Business Case from Practice

Financial Controlling/Data Consolidation

One of the largest German retailers relies on the core components of OA4ERP for their financial controlling – the so-called Nearline Analytic Infrastructure.

The enormous volume involved here in the analytical ad hoc analyses amounts to around 6.3 billion FI lines. With the help of the Data Replication Service integrated in OA4ERP, database and archive data is replicated in the OA4ERP analysis database and evaluated together. Without the Nearline Analytic Infrastructure, a detailed evaluation is either impossible, or only possible with extremely long runtimes over several days.

The quality of the solution is convincing: The query results are generated and made available within seconds.

Business Case: Cash Register Receipts

In the business scenario “cash register receipts” no less than 5,000 supermarkets with more than 25,000 active cash tills are taken into consideration. The bottom line is that this means the evaluation of several billion cash register receipts. The POS data is available exclusively as non-SAP data. With the help of the OA4ERP External Data Services, the cash receipts are imported into the OA4ERP analysis database and are enriched at the same time with SAP data. As a result, comprehensive market analyses – such as the determination of top sellers – can be done without any problem at the touch of a button.

Practical Example

Distributed Systems

Large enterprises often face the challenge that completely different SAP systems with different applications and release status run next to one another in their system landscape. Through consolidation, the operating costs can be reduced considerably. The technology enables system decommissioning scenarios to be represented.

OA4ERP creates the basis for this consolidation. Several SAP systems are connected to a central OA4ERP analysis database. Data from all connected SAP systems is replicated in the analysis database. The evaluation of the data is performed in a leading system. In this system, queries can be made on the data of the connected (legacy) systems.



Interactive analyses can be executed via dashboards on PCs or mobile devices..



Interactive dashboard for sales data analysis in a web browser

SAP

OA4ERP Query - data records read (OA4ERP-MWSKZ)

Menu: Back Exit Cancel System Refresh Fullscreen On/Off Display SQL statement Display information window

NAI Tables: NAI Joins NAI Unions DART Views

Object name: \$BON Description: Bon mit Warengruppe

Object name: \$BONWGR Description: BON mit Warengruppe

Object name: \$BON_2 Description: Bons mit Warengruppe

Object name: \$DRS_BILGUV Description: BilGUV

Object name: \$DRS_BSEG_T001 Description: /PBS/DRS_BSEG JOIN T001

Object name: OA4ERP-MWSKZ Description: Demo Query Mehrwertsteuernzeichen

NAI Join: \$DRS_BSEG_T001 /PBS/DRS_BSEG JOIN T001

Hits/Runtime: 9 0

Maximum no. of hits: 500

CoCd	Crcy	Year Tx	Sum(Debit amt in LC)	Sum(Credit amt in LC)	Sum(Deb/cred.amount)	Count(Tax code)
1000	EUR	2006	2.115.397.388,93	2.116.827.504,90	1.430.115,97-	11.048
1000	EUR	2006 0I	10.000,00	0,00	10.000,00	1
1000	EUR	2006 A0	867.729,60	872.521,60	4.792,00-	2.273
1000	EUR	2006 A1	1.177.830,98	1.195.494,98	17.664,00-	1.704
1000	EUR	2006 AN	2.776.128,96	2.772.128,96	4.000,00	874
1000	EUR	2006 R3	999.242,67	0,00	999.242,67	336
1000	EUR	2006 V0	2.196.384,65	2.180.884,65	15.500,00	286
1000	EUR	2006 V1	11.500.000,00	11.500.000,00	0,00	3
1000	EUR	2006 VN	5.213.961,65	4.760.132,35	453.829,30	8.695

Analyses with the query configurator via the SAP GUI

Bundled know-how for the optimal solution

PBS Software GmbH

PBS Software GmbH is a leading provider of add-on solutions for your SAP system in the areas of data archiving, nearline storage, information lifecycle management, as well as compliant data storage, data extraction and system decommissioning. For more than 25 years, well-known local and international customers have been successfully using PBS solutions. Globally, PBS Software GmbH is a recognized expert for complex, integrated access to "hot" and "cold" data. With its innovative OA4ERP solution, PBS Software GmbH improves the analysis options for SAP/non-SAP data and is ideally positioned for current and future requirements in the SAP environment. .

LIS.TEC GmbH

LIS.TEC GmbH is a constantly growing company headquartered in Ludwigsburg, Germany. It is the world's largest OEM/ASL distributor for IBM software, delivering significant value to ISVs with its Active Sales program. LIS.TEC supports solution providers starting from management consulting and generating new business ideas up to marketing their solution. Partner consultants help to find the right contracts and licensing models for the solutions in relation to IBM software. Lis.Tec also provides 1st and 2nd level support and offers technical validation of customer projects.

RSM Consult GmbH

RSM Consult offers individual consultancy in the areas of Business Analytics (BA) and Corporate Performance Management (CPM) - committed, creative, solution-oriented. Customers benefit from a long-lasting experience and industry expertise as well as the specialist know-how in all BA disciplines. With product Management Information Hosting (MIH) TM, RSM Consult also provides a holistic CPM platform in a private cloud. RSM has been founded in 1999 and is located in Neu-Isenburg, Germany. In addition to managing director Joachim Pajonk, the RSM Consult consulting team includes experienced and excellently trained business analytics specialists.

Are you interested?

- Arrange a meeting for a presentation and clarify your questions with our OA4ERP team.
- Ask for a tailor-made quotation

Phone: + 49 7141 9393-0, email: oa4erp@listec.de